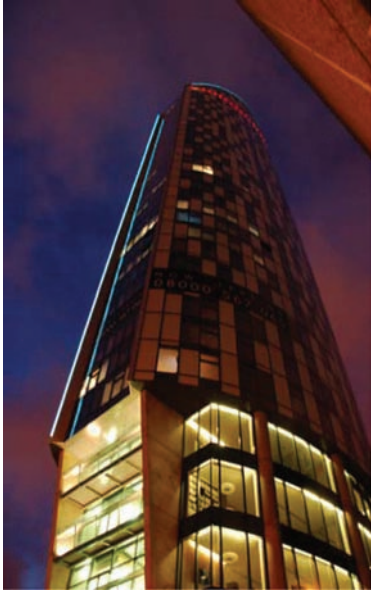


Beetham West Tower

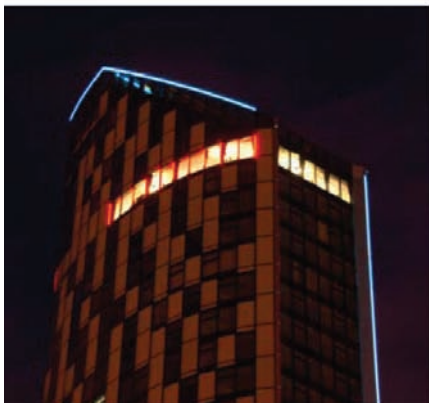


Installed on the Beetham West Tower in Liverpool Light Tape provides an easy to install, easy to maintain system that can be seen for miles and only uses 2 Watts per meter for an ultra low carbon footprint of only 600 Watts for the whole building.

Light Tape has been used to great effect on the Beetham West Tower in Liverpool, designed by Aedas AHR Architects, adding an elegant edge to the building. Standing 134 meters in height the Beetham Tower is almost 50% taller than its 90 meter tall neighbour. Ideally located for both business and pleasure near the world famous waterfront, this 40 storey tower is Liverpool's tallest building so providing the perfect location and opportunity to show the effectiveness of the Light Tape product to its best advantage.

Light Tape is a flat light bulb , as thin as a business card and is virtually indestructible in use...

Light Tape is increasingly becoming an alternative to Neon on all types of architecturally based projects as it offers not only a clean ultra modern alternative to the more traditionally used light forms but also proves to be both more ecological and economical in its long term use of energy Light Tape uses 85 to 90% less energy to run compared to other lighting technologies and so is cost effective and environmentally friendly as it does not contain glass, gas or mercury.



Beetham West Tower, Liverpool